

Project HOME Locations

We provide supportive services at 24 locations across Philadelphia. Project HOME's supportive housing programs at our 20 residences offer permanent, affordable housing for individuals and families who had been homeless. Project HOME has developed 1,038 units of affordable and supportive housing for persons who have experienced homelessness and low-income persons at-risk of homelessness in Philadelphia; there are an additional 24 units under construction and 100 units in the pipeline.

We provide comprehensive health care services at our [Stephen Klein Wellness Center](#), and employment and education programming at our state-of-the-art [Bookspan Learning Center Computer Technology Labs](#). The [Hub of Hope](#) in Suburban Station is a walk-in engagement center for people experiencing homelessness, and the [Helen Brown Community Center](#) is our community hub in the 19121 neighborhood.



Joyce's Place

6849 Parkside Avenue North
Philadelphia, PA 19131
United States



Kairos House

1440 N. Broad Street
Philadelphia, PA 19121
United States



Maguire Residence

1020 E. Orleans Street
Philadelphia, PA 19134
United States



Kate's Place

1829 Sanson Street
Philadelphia, PA 19103
United States



Outreach Coordination Center

1515 Fairmount Avenue
Philadelphia, PA 19130
United States



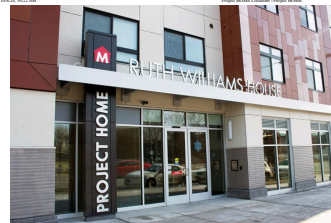
Peg's Place

1301 N. 8th Street
Philadelphia, PA 19122
United States



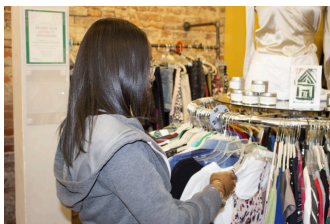
Rowan Homes Diamond

2228 W. Diamond Street
Philadelphia, PA 19121
United States



Ruth Williams House at the Gene & Marlene Epstein Building

2415 N. Broad Street
Philadelphia, PA 19132
United States



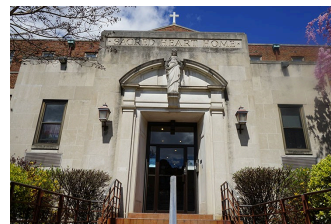
Project HOME Esplan Boutique

1523 Fairmount Avenue
Philadelphia, PA 19130
United States



Rowan Homes Judson

1901 N. Judson Street
Philadelphia, PA 19121
United States



Sacred Heart Recovery Residence

1115 W. Hunting Park Avenue
Philadelphia, PA 19140
United States